



Table of Contents

- Introduction 2
- Importing a FIVE Archived Project (.5ap) file 3
 - Example: Importing the Public Sample Project..... 3
- Importing StatsLog4 Project (.Slog) Files 5
 - Checklist for Importing StatsLog4 (.Slog) Files 5
 - Importing a StatsLog4 Project..... 6
 - Reporting Errors When Importing StatsLog4 Projects 6
- Appendix A: Troubleshooting 7
 - Possible Error Messages When Importing StatsLog4 Projects 7

Introduction

FIVE by StatsLog can import projects from StatsLog4 databases and FIVE archives.

StatsLog4 database files are identified by an extension of .slog. StatsLog4 must be installed on your computer in order to be able to import StatsLog4 databases. You can download and install the latest version of StatsLog4 from <http://www.statslog.net/StatsLogUpdate4PR.exe>.

FIVE archived project files are identified by an extension of .5ap. There are no additional requirements for importing FIVE archived project files.

Importing a FIVE Archived Project (.5ap) file

To import a FIVE archived project (.5ap) file:

1. Click the **FIVE** button, and then click **Import Project**. The *Import Project* window appears.
2. Select the .5ap file that you want to import, and then click **Import**. FIVE will begin importing the project.

Note

If you are importing a FIVE archived project file and another project on the server has the same unique identifier, you will be asked if you want to replace it or cancel the process. If you replace the existing project, there is no way to undo the operation, so you should only choose to replace the project if you are absolutely certain that you will not need the existing version anymore. If the project doesn't already exist on the server, then you will not see any further messages unless the import process encounters a problem.

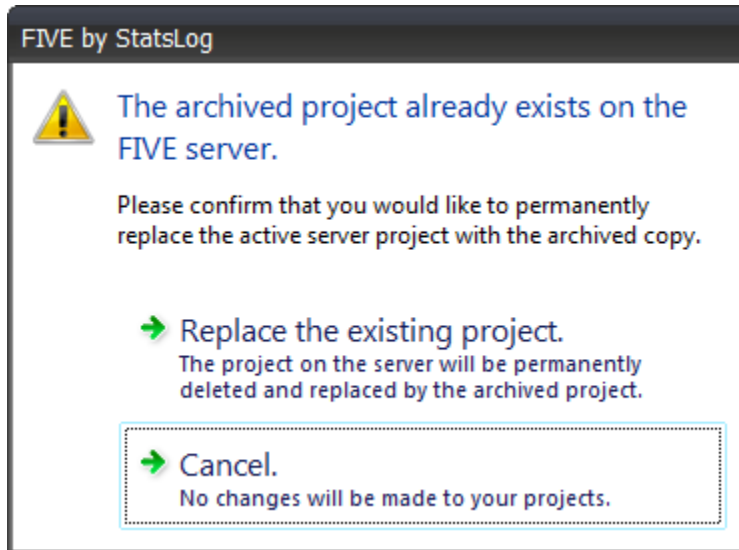
When the project has been successfully imported, it will automatically be opened and the *Dashboard* tab will be selected.

Example: Importing the Public Sample Project

In order to reduce the time it takes to download and install the software, FIVE doesn't come with a sample project. However, there is a sample project available from our website that you can manually download and import as follows:

1. Save the public sample project to your Desktop from http://www.statslog.com/five_public_sample.5ap
2. Start FIVE by StatsLog.
3. Click the **FIVE** button, and then click **Import Project**. The *Import Project* window appears.
4. From the *Look in* list, select the Desktop folder, then select the *public_sample* file.
5. Click **Import**. The project will be uploaded to your FIVE server, imported and then opened. This process may take a couple of minutes.

While FIVE is importing the archived project, you may see the following message:



This means that the project has been previously imported. You can choose to replace the existing project on the server, or cancel.

IMPORTANT

If you choose to replace the existing project on the server, it will be permanently deleted and replaced by the archived project. **There is no way to undo this operation.**

Importing StatsLog4 Project (.Slog) Files

Checklist for Importing StatsLog4 (.Slog) Files

Before you try to import a StatsLog4 (.slog) file into FIVE, please complete the following checklist:

- Make sure the latest version of StatsLog4 has been installed from <http://www.statslog.net/StatsLogUpdate4PR.exe>
- Make sure the latest version of the FIVE client and server, or single-user software has been installed from <http://www.statslog.com>
- Repair the project in StatsLog4 as follows:
 1. Start StatsLog4
 2. Click the File menu and then click Repair Project. The Repair Project window appears.
 3. Select the project that you want to import into FIVE, and then click Repair.
- Open the project in StatsLog4. If there are any errors when you try to open the project in StatsLog4, you will not be able to import the project into FIVE. Please contact StatsLog Support for further assistance.
- Make sure that the project isn't using the Phased Statements feature of StatsLog4 as follows:
 1. In StatsLog4, Click the **Materials** menu, and then click *Project Information*. The Project Information window appears.
 2. On the *General* tab, under the *Details* section, confirm that the *Generate Individual Statements for Each Phase* option has **not** been selected.
 - If the *Generate Individual Statements for Each Phase* has not been selected, then click **OK**, and skip to the next checklist item.
 - If *Generate Individual Statements for Each Phase* has been selected, and it can be cleared, clear it, click **OK**, and then skip to the next checklist item.
 - If the *Generate Individual Statements for Each Phase* option cannot be cleared, then you will not be able to import the project into FIVE. Please contact StatsLog Support for further assistance.
- Make sure that the project has the minimum amount of project information data defined as follows:
 1. While still on the *Project Information* window from the previous step, make sure that the *Reference* and *Title* boxes have values.

2. On the *Client*, *Builder* and *Designer* tabs, make sure that a contact has been selected for each role.

Make sure that your project is not using the deprecated Expenditures material as follows:

1. In StatsLog4, click the Materials menu.
 - If there is no Expenditures menu item, the project is unlikely to be using the Expenditures material, and you can skip to the next checklist item.
 - If there is an Expenditures menu item, click it. The *Expenditures* window appears. If there are any expenditure items in the list, then you will not be able to import the project into FIVE. Please contact StatsLog Support for further assistance.

Once you have completed the above check list, you should be able to import your StatsLog4 project into FIVE. If you are unable to import the project, please see the *Reporting Errors When Importing StatsLog4 Projects* section.

Importing a StatsLog4 Project

To import a StatsLog4 project (.slog) file:

1. Click the **FIVE** button, and then click **Import Project**. The *Import Project* window appears.
2. Select the .slog file that you want to import, and then click **Import**. FIVE will begin importing the project.

When the project has been successfully imported, it will automatically be opened and the *Dashboard* tab will be selected.

Reporting Errors When Importing StatsLog4 Projects

If you are unable to import a StatsLog4 project for any reason, please contact StatsLog Support as follows:

1. Click the **Report to StatsLog** button on the error message window in FIVE (if available), then fill-in the error report and click **Send**.
2. Start StatsLog4 and open the project that could be imported.
3. Click the **Help** menu, and then click **Contact StatsLog Support Over Secure Connection**. The *Contact StatsLog Support Over Secure Connection* window appears.
4. In the *Reply To* section, type your contact information into the appropriate boxes.
5. In the *Attachments* section, select the *Current Project & Forms* option.
6. Click **Send**.

Once we have a copy of your error report and StatsLog4 project, we will attempt to reproduce the problem and provide a solution.

Appendix A: Troubleshooting

Possible Error Messages When Importing StatsLog4 Projects

Error Message	Description/Solution
<i>StatsLog4 must be installed before you can import .SLOG files.</i>	FIVE cannot import StatsLog4 projects unless StatsLog4 has been installed on your computer. Download and install the latest version of StatsLog4 from http://www.statslog.net/StatsLogUpdate4PR.exe , then try to import the project again.
<i>The source file could not be found.</i>	The StatsLog4 project file may have been deleted by someone else between the time you selected it and the time that FIVE started trying to import it. Another possibility is that you do not have permission to read the file. If the file has not been deleted and you continue to see this error message, please contact your IT administrator for assistance.
<i>The StatsLog4 project is locked. You do not have permission to open the file, or someone else is using it.</i>	FIVE was unable to open the StatsLog4 project. Usually this is a permission problem, or in situations where a file is being shared on a network drive it could mean that someone else is working on the project. Try to repair the project with StatsLog4, and then try to import it again. If this doesn't help, please contact your IT administrator for assistance.
<i>The StatsLog4 project could not be opened.</i>	FIVE was unable to open the StatsLog4 project for an unknown reason. Ask your IT administrator to download and install the latest version of StatsLog4 on your computer, and then try to import the project again. If you continue to see this error message, please send the project to StatsLog Support for review as described in the <i>Reporting Errors When Importing StatsLog4 Projects</i> section of this guide.
<i>The connection to the destination FIVE server was lost.</i>	A network problem has broken the connection to the FIVE server. Try to reconnect to the server (or restart FIVE) and then try to import the project again. If you continue to see this error message when you try to import a StatsLog4 project, please send it to StatsLog Support for review as described in the <i>Reporting Errors When Importing StatsLog4 Projects</i> section of this guide.

Error Message	Description/Solution
<i>The destination project could not be created.</i>	<p>A new blank destination project is required to hold the imported project data, but it could not be created on the FIVE server.</p> <p>Ask your IT administrator to download and install the latest version of the FIVE server and client software. The latest version of the FIVE server software is always available from http://www.statslog.com/five_server_setup.exe. The latest version of the FIVE client software is always available from http://www.statslog.com/five_client_setup.exe.</p> <p>If the problem is not resolved after the FIVE software has been updated, please contact StatsLog Support at support@statslog.com or 416-778-1719 to report the problem.</p>
<i>StatsLog4 projects that use phased statements cannot be imported into FIVE.</i>	<p>FIVE cannot import projects that use the phased statements feature of StatsLog4. Please contact StatsLog Support at support@statslog.com or 416-778-1719 if you need to import a project that uses phased statements.</p>
<i>StatsLog4 projects that use the deprecated Expenditures material cannot be imported into FIVE.</i>	<p>FIVE cannot import projects that use the old Expenditures material table. Please contact StatsLog Support at support@statslog.com or 416-778-1719 if you need to import a project that uses the Expenditures material.</p>
<i>The StatsLog4 <table name> table could not be opened.</i>	<p>FIVE could not read the StatsLog4 source project data. The database could be corrupt, or there could be a unknown source of the problem. Try to repair the project in StatsLog4 and then import the project again.</p> <p>If you continue to see this error message, please send the project to StatsLog Support for review as described in the <i>Reporting Errors When Importing StatsLog4 Projects</i> section of this guide.</p>

Error Message	Description/Solution
<p><i>The StatsLog4 divisions table could not be imported.</i> <i>OR</i> <i>A FIVE <tab name> could not be created from a StatsLog4 <material name> item.</i></p>	<p>FIVE could not import data from the StatsLog4 project. Ask your IT administrator to download and install the latest version of the FIVE server and client software. The latest version of the FIVE server software is always available from http://www.statslog.com/five_server_setup.exe. The latest version of the FIVE client software is always available from http://www.statslog.com/five_client_setup.exe. If the problem is not resolved after FIVE has been updated, please contact StatsLog Support at support@statslog.com or 416-778-1719 to report the problem.</p>
<p><i><Any Other Error Message></i></p>	<p>If you see any error message that is not in the list above, please send the project to StatsLog Support for review as described in the <i>Reporting Errors When Importing StatsLog4 Projects</i> section of this guide.</p>